

POST-TENSIONING COMPONENTS



3-Part Wedges & 2-Part Wedges
Strand – Coupler
Clamping Jaws for PT- Jacks
Wedge Barrel – Set of 1 Wedge & 1 Barrel
Ferrule
Filter-in Heads

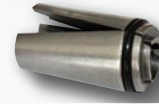
3-Part Wedges & 2-Part Wedges

SMC wedges are manufactured from case hardened steel that guarantees a permanent and highest quality due to the fully automated production performance and 100% quality inspection. Each individual segment incl. tooth shape is inspected by computer cameras and its high sensitive sensors.



| Description type | Part-no. | Segments | Wedge length mm | Wedge Ø mm | Material |
|---------------------|----------|----------|-----------------|------------|----------|
| Wedge 0,50" / 0,52" | 520037 | 3-part | 40 | 25 | C15Pb+C |
| Wedge 0,60" | 620036 | 3-part | 42 | 29 | C15Pb+C |
| Wedge 0,62" | 620037 | 3-part | 45 | 29 | C15Pb+C |
| Wedge 0,60"- 0,62" | 620038 | 3-part | 43 | 28 | C15Pb+C |

Clamping Jaws for PT- Jacks



| Description type | Part-no. | Segments | Wedge length mm | Wedge Ø mm | Material |
|----------------------------|----------|----------|-----------------|------------|----------------|
| Clamping jaw 0,50" / 0,52" | 520137 | 3-part | | | 18CrMo4 F-1550 |
| Clamping jaw 0,60" | 620136 | 3-part | | | 18CrMo4 F-1550 |

Strand – Coupler

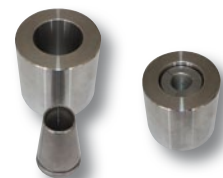
Is used to lengthen unstressed wire tendons in construction. The strand coupler consists of two spring loaded wedges that connects two 7-wire strands individually.



| Description type | Part-no. | Segments | Coupler length mm | Coupler Ø mm | Material |
|------------------------------|----------|---|-------------------|--------------|--------------------------------------|
| Strand coupler 0,50" / 0,52" | 62048 | wedge, spring, fitting bolt, chuck barrel | 164 | 41 | C15Pb+C spring steel S355J2G3C / C45 |
| Strand coupler 0,60" | 62049 | wedge, spring, fitting bolt, chuck barrel | 200 | 46 | C15Pb+C spring steel S355J2G3C / C45 |
| Strand coupler 0,62" | 62050 | wedge, spring, fitting bolt, chuck barrel | 200 | 46 | C15Pb+C spring steel S355J2G3C / C45 |

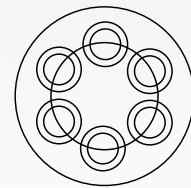
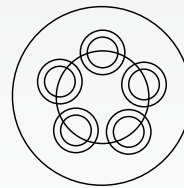
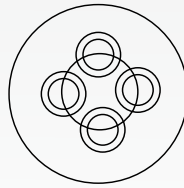
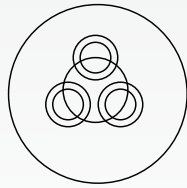
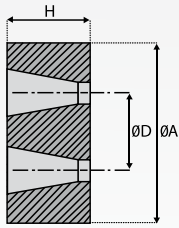
Wedge Barrel – Set of 1 Wedge & 1 Barrel

The reusable wedge barrels are the most used product in concrete prestressing systems. Low cost, easy visual inspection and simple maintenance. Made from high quality steel.



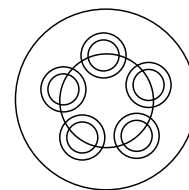
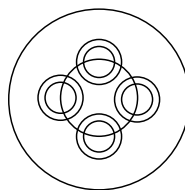
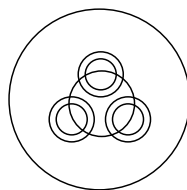
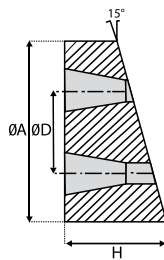
| Description type | Part-no. | Segments | Barrel length mm | Barrel Ø mm | Material |
|----------------------------|----------|----------|------------------|-------------|---------------|
| Wedge barrel 0,60" / 0,62" | 62046 | | 48 | 49 | C15Pb+C / C45 |

ANCHOR HEADS – Standard



| Description type | Part-no. | Inch | Holes | Dim. A mm | Dim. H mm | Dim. D mm | Weight in kg/pc. |
|------------------|----------|-------|-------|-----------|-----------|-----------|------------------|
| Anchor head | WP0305 | 0,50" | 3 | 95 | 50 | 41 | 2,42 |
| Anchor head | WP0405 | 0,50" | 4 | 100 | 50 | 50 | 2,61 |
| Anchor head | WP0505 | 0,50" | 5 | 110 | 55 | 60 | 3,48 |
| Anchor head | WP0605 | 0,50" | 6 | 120 | 55 | 70 | 4,13 |
| Anchor head | WP0306 | 0,60" | 3 | 95 | 50 | 41 | 2,26 |
| Anchor head | WP0406 | 0,60" | 4 | 100 | 50 | 50 | 2,39 |
| Anchor head | WP0506 | 0,60" | 5 | 110 | 55 | 60 | 3,19 |
| Anchor head | WP0606 | 0,60" | 6 | 120 | 55 | 70 | 3,78 |

ANCHOR HEADS – with 15°



| Description type | Part-no. | Inch | Holes | Dim. A mm | Dim. H mm | Dim. D mm | Weight in kg/pc. |
|------------------|----------|-------|-------|-----------|-----------|-----------|------------------|
| Anchor head | WP030515 | 0,50" | 3 | 95 | 65 | 41 | 2,54 |
| Anchor head | WP040515 | 0,50" | 4 | 100 | 65 | 50 | 2,71 |
| Anchor head | WP050515 | 0,50" | 5 | 110 | 70 | 60 | 3,50 |
| Anchor head | WP030615 | 0,60" | 3 | 95 | 65 | 41 | 2,37 |
| Anchor head | WP040615 | 0,60" | 4 | 100 | 65 | 50 | 2,48 |
| Anchor head | WP050615 | 0,60" | 5 | 110 | 70 | 60 | 3,21 |

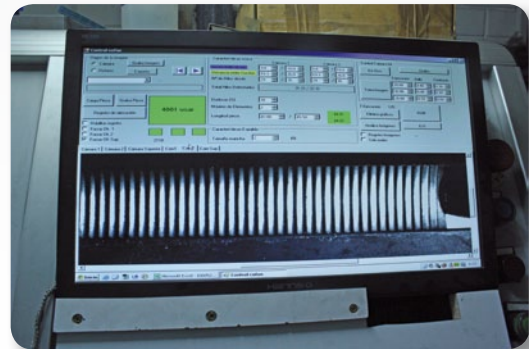
Fully automated Wedge Production and 100% Quality Inspection



24 h fully automated wedge production



100% inspection of each segment incl. tooth shape



Packaging in plastic buckets
of 100 pcs. each



Packaging in
plastic bags
of 100 pcs. each

